



GetSet™

Fight Back Against the Cold

When it Gets Cold, Get Ready with GetSet

GetSet from CBM is the industry equalizer in the war against cold weather delays. Different formulations allow GetSet ready-mixed concrete to achieve quicker, more predictable set times even in the dead of winter.

With GetSet you can achieve excellent surface appearance and improved finishing characteristics while you speed up set time by up to 35%. This can often mean the difference between waiting an entire season and finishing a project ahead of schedule.



Don't let cold weather slow you down.



COLD WEATHER IS TOUGH

Cold weather concrete construction can be a headache for even the most experienced contractor. Scheduling a pour and putting on an expensive crew and equipment only to have extremely cold temperatures arrive is an uncontrollable act of nature.

But having a bright and sunny morning with the temperature hovering around the freezing point can be an even greater challenge. Ambient temperatures often fluctuate dramatically. Set time for normal concrete with ambient temperatures between -7°C and $+7^{\circ}\text{C}$ can vary substantially and it could take more than 16 hours to get your finishers working.

**For technical questions call
St. Marys CBM Technical Service
at 416-423-1300**

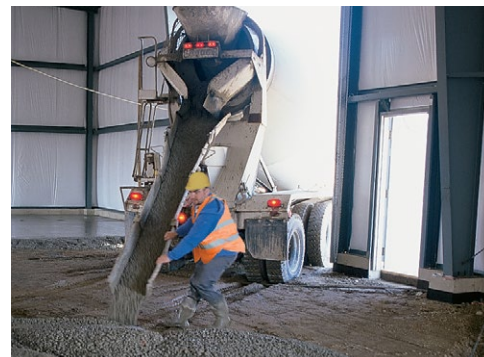
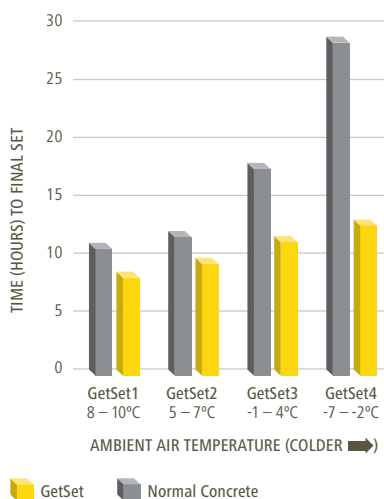
MINIMIZE COSTS

GetSet speeds up concrete set times by as much as 35% and permits placement at temperatures as low as -7°C .

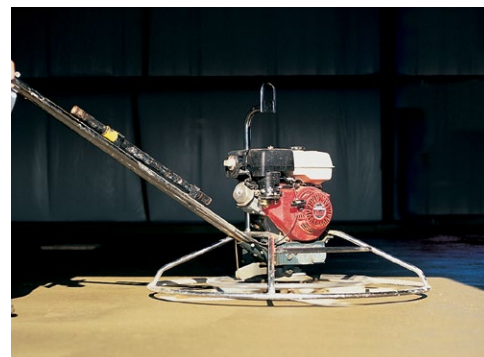
A little extra now can save a lot of headaches later, such as:

- Extra labour costs
- Overtime labour costs
- Equipment costs
- Heating, insulating and protection costs
- Rescheduling costs

FINAL SET



Achieve faster, more predictable set times in the cold.



Speed up set time while maintaining a great surface appearance.



Sales and Administration
55 Industrial Street
Toronto, Ontario M4G 3W9
Phone 416-423-1300
Fax 416-423-6912
canadabuildingmaterials.com

GetSet™ is a trademark of Votorantim Cimentos. All information is based on data and knowledge believed to be true and accurate at time of printing.